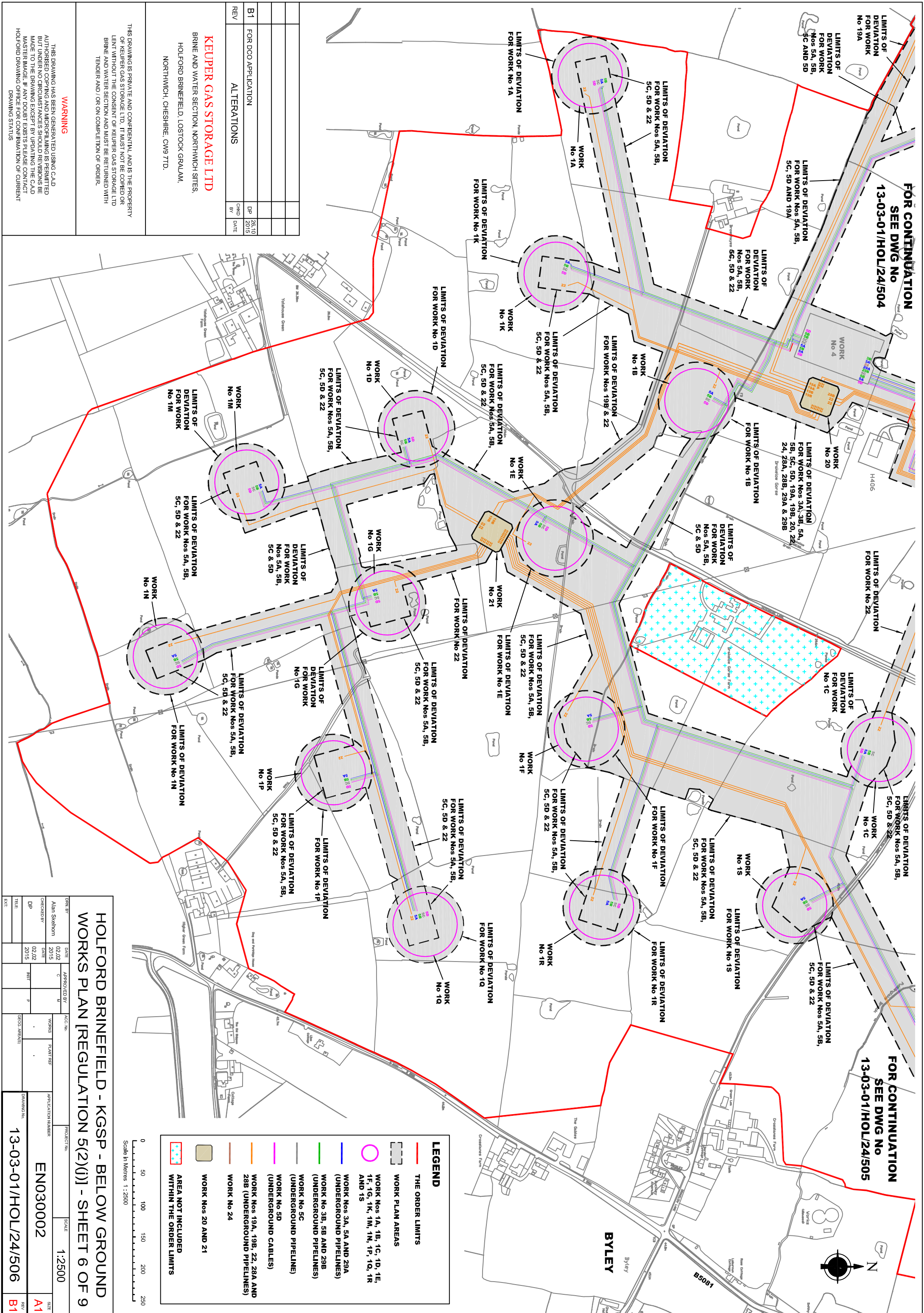


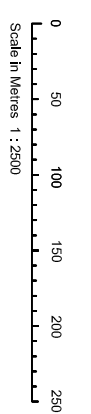
FOR CONTINUATION
SEE DWG No
13-03-01/HOL/24/504

FOR CONTINUATION
SEE DWG No
13-03-01/HOL/24/505



LEGEND

- THE ORDER LIMITS
- WORK PLAN AREAS
- WORK Nos 1A, 1B, 1C, 1D, 1E, 1F, 1G, 1K, 1M, 1N, 1P, 1Q, 1R AND 1S
- WORK Nos 3A, 5A AND 29A (UNDERGROUND PIPELINES)
- WORK No 3B, 5B AND 29B (UNDERGROUND PIPELINES)
- WORK No 5C (UNDERGROUND PIPELINE)
- WORK No 5D (UNDERGROUND CABLES)
- WORK Nos 19A, 19B, 22, 28A AND 28B (UNDERGROUND PIPELINES)
- WORK No 24
- WORK Nos 20 AND 21
- AREA NOT INCLUDED WITHIN THE ORDER LIMITS



REV	CHANGED BY	DATE	DESCRIPTION
B1	DP	25/10/2015	FOR DCO APPLICATION
			ALTERATIONS

KEUPER GAS STORAGE LTD
BRINE AND WATER SECTION, NORTHWICH SITES,
HOLFORD BRINEFIELD, LOSTOCK GRALAM,
NORTHWICH, CHESHIRE, CW9 7TD.

THIS DRAWING IS PRIVATE AND CONFIDENTIAL AND IS THE PROPERTY OF KEUPER GAS STORAGE LTD. IT MUST NOT BE COPIED OR LENT WITHOUT THE CONSENT OF KEUPER GAS STORAGE LTD. BRINE AND WATER SECTION AND MUST BE RETURNED WITH TENDER AND / OR ON COMPLETION OF ORDER.

WARNING

THIS DRAWING HAS BEEN GENERATED USING C.A.D. AUTHORIZED COPYING AND MICROFILMING IS PERMITTED BUT UNDER NO CIRCUMSTANCES SHOULD REVISIONS BE MADE TO THE DRAWING EXCEPT BY UPDATING THE C.A.D. MASTER IMAGE. IF ANY DOUBT EXISTS PLEASE CONTACT HOLFORD DRAWING OFFICE FOR CONFIRMATION OF CURRENT DRAWING STATUS.

HOLFORD BRINEFIELD - KGSP - BELOW GROUND WORKS PLAN [REGULATION 5(2)(J)] - SHEET 6 OF 9

DATE	02/02/2015	APPROVED BY	ALAN SKELTON	PROJECT No.	EN030002	SCALE	1:2500
CHECKED BY	DP	DATE	02/02/2015	WORKS	PLANTIES	APPLICATION NUMBER	EN030002
TITLE				EXT			
REV	B1	DATE		SIZE	A1	PROJECT No.	13-03-01/HOL/24/506