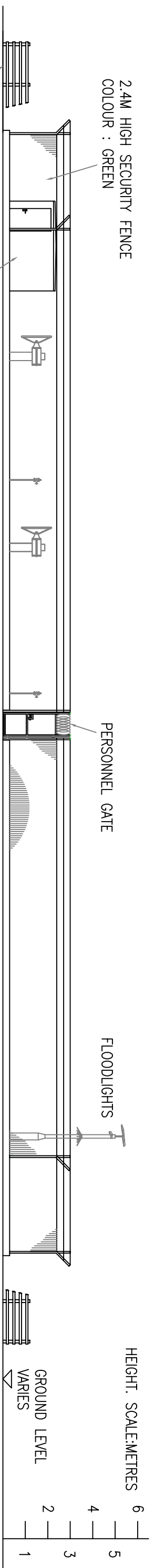


2.4M HIGH SECURITY FENCE
COLOUR : GREEN

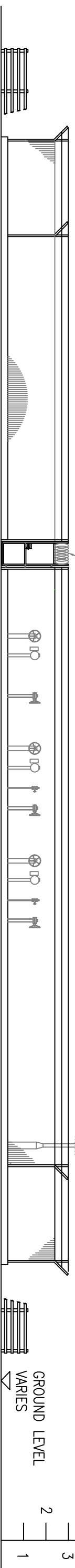


TIMBER POST AND
RAIL FENCE

ELEVATION LOOKING NORTH
1:150

PERSONNEL GATE

HEIGHT. SCALE:METRES

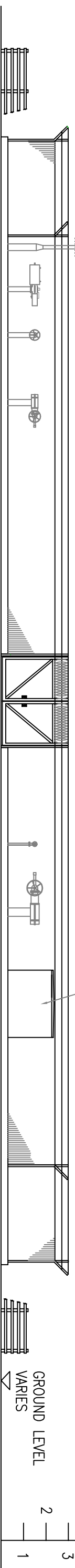


ELEVATION LOOKING SOUTH
1:150

MAIN GATES

CONTROL CABIN

HEIGHT. SCALE:METRES



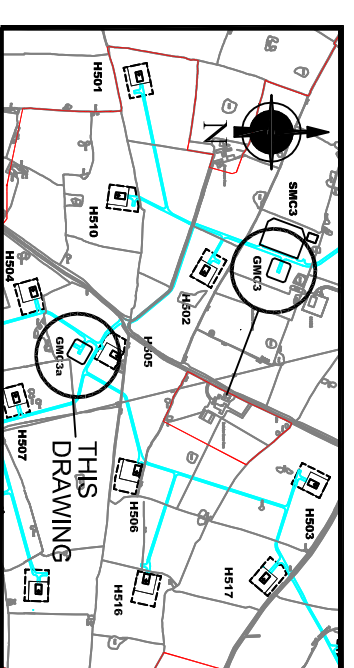
ELEVATION LOOKING EAST
1:150

VALVES & ACTUATORS FOR
UNDERGROUND PIPEWORK (TYP)

HEIGHT. SCALE:METRES



ELEVATION LOOKING WEST
1:150



HOLFORD BRINEFIELDS - KGSP - GAS MARSHALLING COMPOUNDS (GMCS3) AND (GMCS3a)

TITLE		HOLFORD BRINEFIELDS - KGSP - GAS MARSHALLING COMPOUNDS (GMCS3) AND (GMCS3a)		<p>THIS DRAWING HAS BEEN GENERATED USING CAD BUT UNDER NO CIRCUMSTANCES SHOULD REVISIONS BE MADE TO THE DRAWING EXCEPT BY UPDATING THE CAD MASTER IMAGE. IF ANY DOUBT EXISTS PLEASE CONTACT HOLFORD DRAWING OFFICE FOR CONFIRMATION OF CURRENT DRAWING STATUS.</p> <p>WARNING</p>	
REV	DESCRIPTION	CHKD BY	DATE	ISSN BY	DATE
B1	FOR DCO APPLICATION ALTERATIONS	RDS	26/10/2015	Alan Capper	02/02/2015
<p>THIS DRAWING IS PRIVATE AND CONFIDENTIAL AND IS THE PROPERTY OF KEUPER GAS STORAGE LIMITED. IT MUST NOT BE COPIED OR LENT WITHOUT THE CONSENT OF KEUPER GAS STORAGE LIMITED BRINE AND WATER SECTION AND MUST BE RETURNED WITH TENDER AND / OR ON COMPLETION OF ORDER.</p>		<p>KEUPER GAS STORAGE LIMITED BRINE AND WATER SECTION, NORTHWICH SITES, HOLFORD BRINEFIELD, LOSTOCK GRALAM, NORTHWICH, CHESHIRE, CW9 7TD.</p>		<p>APPROVED BY: [Signature]</p>	
PROJECT No.		SCALE		<p>APPROVED BY: [Signature]</p>	
DRAWING No.		1:150		<p>APPROVED BY: [Signature]</p>	
13-03-01/HOL/24/272		EN030002		<p>APPROVED BY: [Signature]</p>	
REV		SIZE		<p>APPROVED BY: [Signature]</p>	
B1		A3		<p>APPROVED BY: [Signature]</p>	