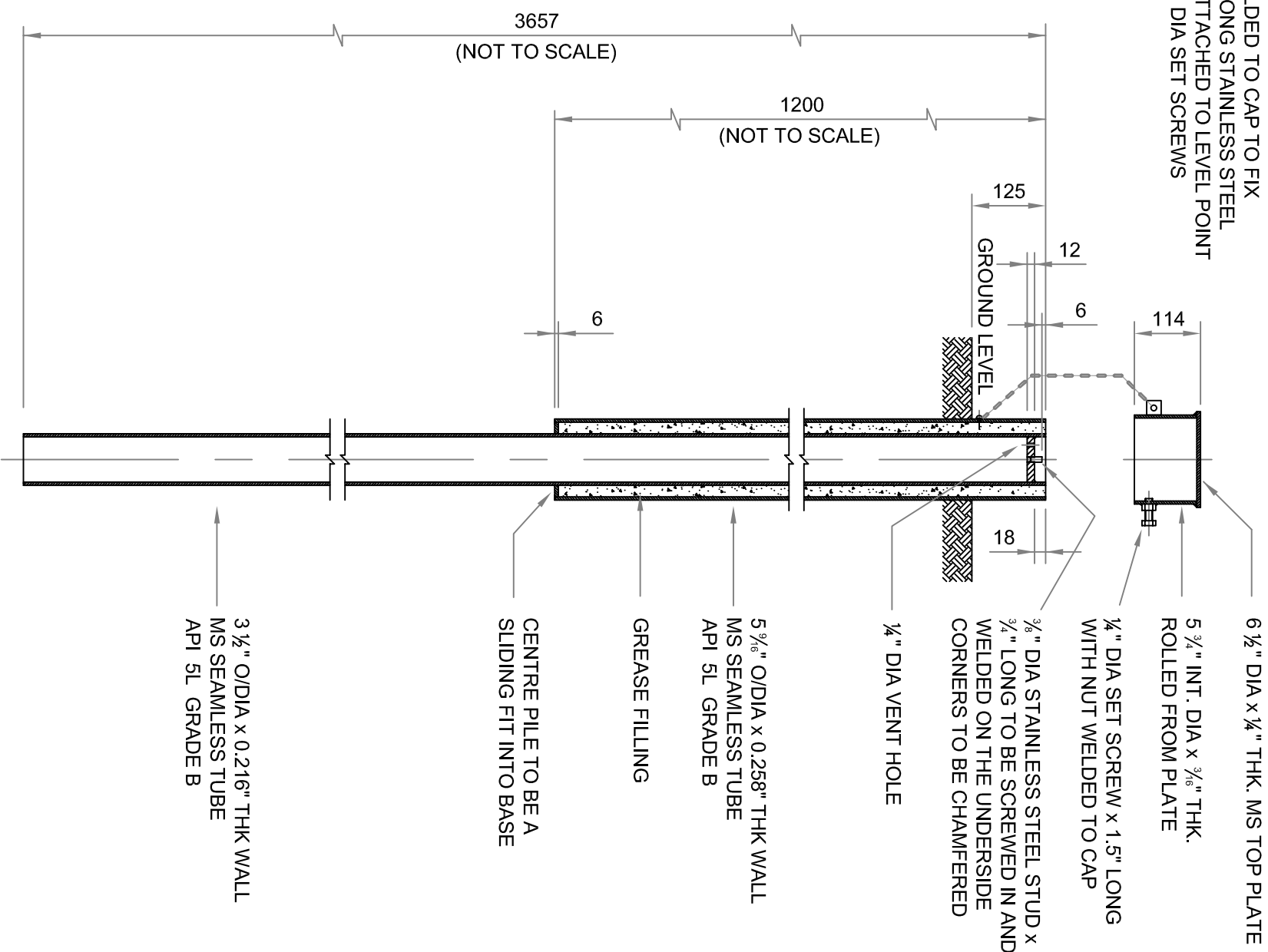
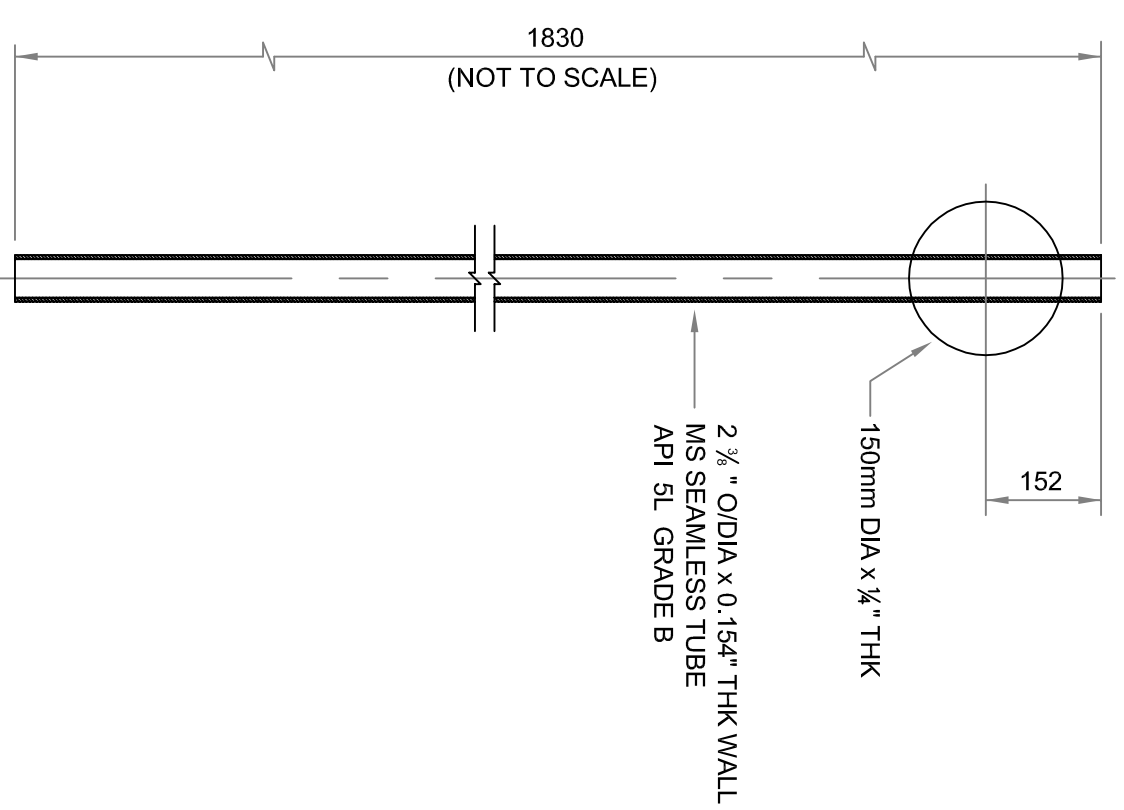


NOTE:-
LUG WELDED TO CAP TO FIX
300mm LONG STAINLESS STEEL
CHAIN ATTACHED TO LEVEL POINT
WITH 1/4" DIA SET SCREWS



165 No. UNITS REQ'D THUS. MKD. PLP.



165 No. UNITS REQ'D THUS. MKD. MP.

PAINTING SPEC :-
FOR MARKER POST AND CAP

AFTER FABRICATION ALL SHARP EDGES TO BE REMOVED, THEN SHOT
BLASTED TO SA 2 1/2 TO SWEDISH STANDARD SIS 05.59.00 AND
PAINTED WITH ONE COAT OF I.C.I. DULUX TRADE ZINC PRIMER
(TWO PACK) COLOUR GREY, THEN ONE COAT (POST OFFICE RED) GLOSS
PRIOR TO DELIVERY TO SITE.

HOLFORD BRINEFIELD - KGSP - DETAILS OF PRECISE LEVEL POINT AND MARKER POST

TITLE		HOLFORD BRINEFIELD - KGSP - DETAILS OF PRECISE LEVEL POINT AND MARKER POST		DRAWING No.		13-03-01/HOL/24/344	
REV	FOR DCO APPLICATION	RDS	26.10.2015	DATE	02.02.2015	DATE	02.02.2015
B1	ALTERATIONS	CHKD BY		EXT.		APPROVED BY	
<p>THIS DRAWING IS PRIVATE AND CONFIDENTIAL AND IS THE PROPERTY OF KEUPER GAS STORAGE LIMITED. IT MUST NOT BE COPIED OR LENT WITHOUT THE CONSENT OF KEUPER GAS STORAGE LIMITED BRINE AND WATER SECTION AND MUST BE RETURNED WITH TENDER AND / OR ON COMPLETION OF ORDER.</p>				<p>THIS DRAWING HAS BEEN GENERATED USING CAD BUT UNDER NO CIRCUMSTANCES SHOULD REVIEWS BE MADE TO THE DRAWING EXCEPT BY UPDATING THE CAD MASTER IMAGE. IF ANY DOUBT EXISTS PLEASE CONTACT HOLFORD DRAWING OFFICE FOR CONFIRMATION OF CURRENT DRAWING STATUS.</p>			
<p>KEUPER GAS STORAGE LIMITED BRINE AND WATER SECTION, NORTHWICH SITES, HOLFORD BRINEFIELD, LOSTOCK GRALAM, NORTHWICH, CHESHIRE, CW9 7TD.</p>				<p>WARNING</p>			
SCALE		NOT TO SCALE		PROJECT No.		EN030002	
SITE		A3		WORKS		PLANT REF	
REV		B1		APPROVED BY		APPROVED BY	