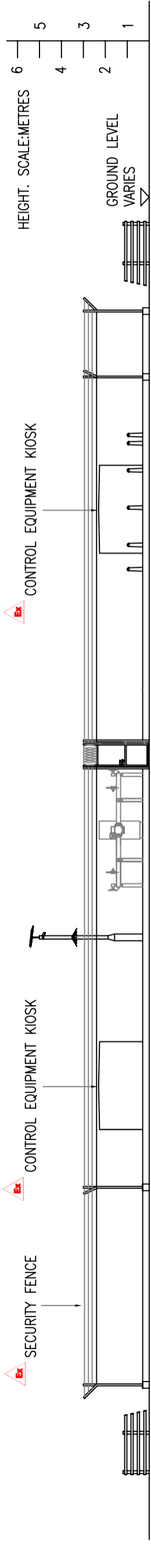
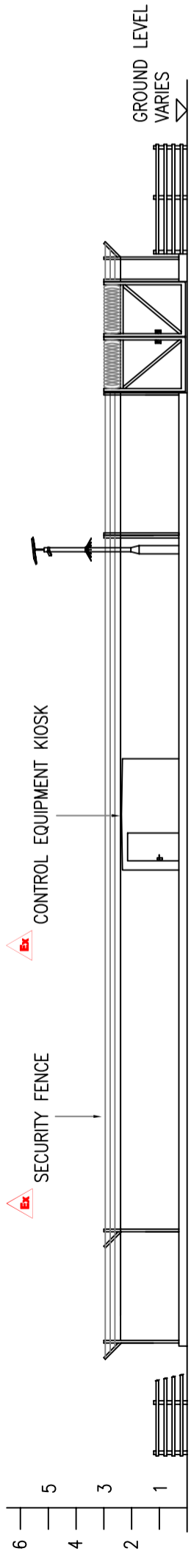


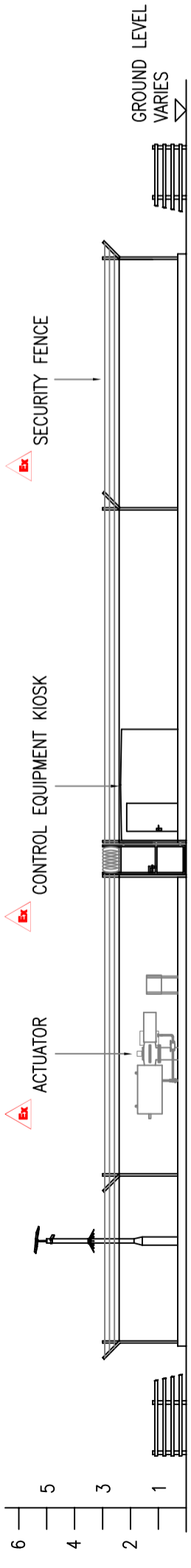
ELEVATION LOOKING NORTH
1:200



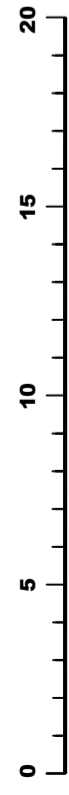
ELEVATION LOOKING SOUTH
1:200



ELEVATION LOOKING EAST
1:200

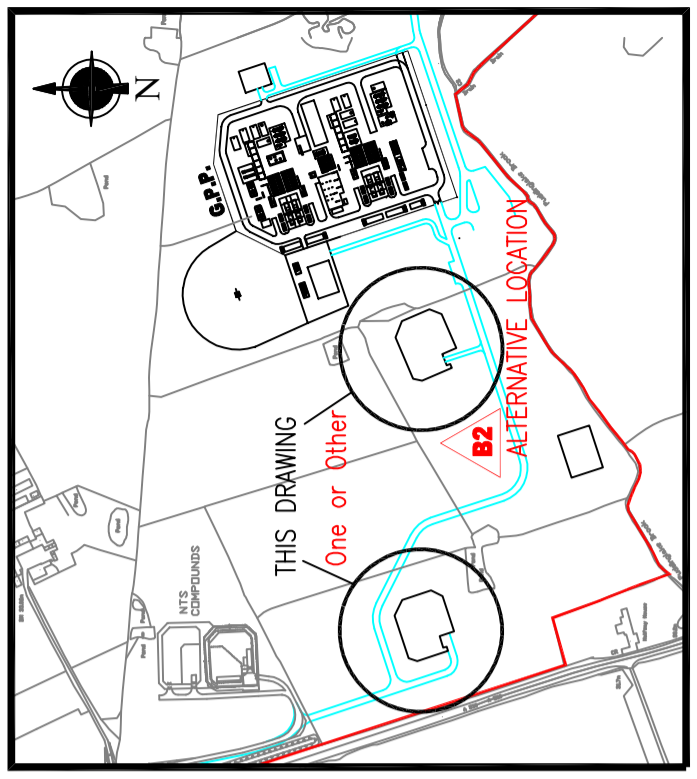


ELEVATION LOOKING WEST
1:200



Ex Labels added during examination but not carried through to final DCO Certified Plans

B2 2022 AMENDMENTS (Drawing revision B2)



HOLFORD BRINEFIELD - KGSP - ELEVATIONS ON TRANSMISSION SYSTEM COMPOUND

DATE		APPROVED BY	ACC. No.	PROJECT No.	SCALE
08.06 2022	RDS	C			1:200
DRN BY		ALON COPPER	WORKS PLANT REF APPLICATION NUMBER		
CHECKED BY		RDS	EN030002		
DATE		INST	DRAWING No.		
26.10 2015	RDS	E	13-03-01/HOL/24/274		
TITLE		ALTERATIONS			
REV		REV			
B2	Submission for 2022 Amendment Order	SIZE A3			
B1	FOR DCO APPLICATION	REV B2			

KEUPER GAS STORAGE LIMITED
BRINE AND WATER SECTION, NORTHWICH SITES,
HOLFORD BRINEFIELD, LOSTOCK GRAMAM,
NORTHWICH, CHESHIRE, CW9 7TD.

WARNING
THIS DRAWING HAS BEEN GENERATED USING C.A.D. AUTHORIZED COPYING AND REPRODUCTION IS PERMITTED BUT UNDER NO CIRCUMSTANCES SHOULD REVISIONS BE MADE TO THE DRAWING EXCEPT BY UPDATING THE C.A.D. MASTER IMAGE. IF ANY DOUBT EXISTS PLEASE CONTACT HOLFORD DRAWING OFFICE FOR CONFIRMATION OF CURRENT DRAWING STATUS.